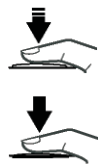
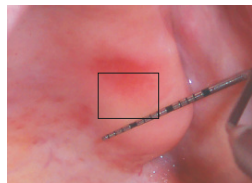


**How to focus with compact cameras:**

1. Put the measure or parodontic probe next to the area of interest.
2. Focus on the edge of the probe and press the shutter button halfway.
3. If the indicator is green and the camera double beeps - Keep pressing the shutter button halfway and recompose the picture as desired. Then press down completely and take the picture.
4. If the indicator is yellow or red, then release the shutter button, change the distance, focus on the measure and try it again.



Focus  
Exposure

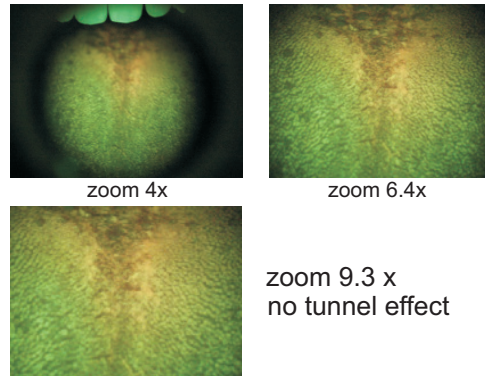
**Trouble shooting:**

1. **Images too dark?**  
Please try to use a longer exposure (1/30)
2. **Images are too grainy?**  
Use a lower ISO settings (800)
3. **The depth of field is too small?**  
Try to use a larger f-stop (f 9)
4. **Images are too blurred?**  
Check your focusing process according to the manual section - How to focus.

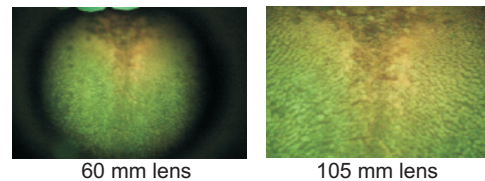
**5. Images have dark corners (vignetting)?**

Dark corners or rounded black border is due to insufficient focal distance. It should be at least 100mm (SLR) or approx. 6x zoom (compact cameras)

**Tunnel effect on compact cameras**



**Tunnel effect on SLR cameras**



**VELscope**  
**Camera Kit**



**User Manual**  
Version 1.2

Hotline USA/Canada: +1 800-200-3594  
Hotline: Europe +49 73 52 94 16 49 7

doctorseyes GmbH  
Abteistr. 18/1  
88416 Ochsenhausen  
Germany  
Fax: +49 7352 9416499  
info@doctorseyes.com  
www.doctorseyes.com

doctorseyes™

Dear **VELscope** user,

Thank you for using the **VELscope Camera Kit** from doctorseyes.

It's not easy to take good pictures in a low fluorescent light. This user manual describes the general operations and settings, which will help you the first time you use your VELscope for photo documentation.

The **VELscope Camera Kit**, which you have in your hands is ready to use with SLR cameras. For compact cameras you may need additional reduction tubes, rings and lenses. For detailed information please consult our website.

All VELscope users are welcome to download the VELview imaging Software from our website [www.doctorseyes.com/velscope](http://www.doctorseyes.com/velscope).

The doctorseyes Team

**What is inside the box:**

- **VELscope** Adapter Ring
- step up ring 49-52 mm
- step down ring 55-52 mm
- step down ring 58-52 mm
- step down ring 62-52 mm
- step down ring 67-52 mm
- Manual



**How to assemble:**

1. Remove the gray ring.



2. For SLR Cameras: Connect the VELscope adaptor directly to the camera lens and the VELscope. You can also use the adapter ring to decrease or increase the diameter if needed.



3. For compact Cameras: Connect the VELscope adaptor to the optional tube\*, which should be already mounted to the camera, then connect to the VELscope.



on SLR lens



or on tube\* for compact camera

\* To see if your camera is suitable for taking pictures with the VELscope please consult [www.doctorseyes.com](http://www.doctorseyes.com) for camera list and needed accessories.

**General camera settings:**

These settings will help you to take a first VELscope image. Then you can adjust the parameters depending on your camera.

Exposure mode:	Manual
Aperture:	f 5,4 (approx.)
Exposure time:	1/50
ISO:	1600
Flash:	off
Focus:	Manual
White balance:	Automatic

Due to differences in cameras you may have to consult your manual for instructions on how to change settings.

**Attention !**

**It is important to reduce ambient light to a minimum.**

Otherwise ambient light and fluorescence from the tissue are mixed together and you can't separate the two.

**How to focus with the SLR camera:**

1. See your camera manual on how to switch to manual focus mode.
2. Set the focus distance to approx. 8 inches (20cm).
3. Move the camera back and forth to determine the best focussed image.
4. Use the focus ring for fine focus.